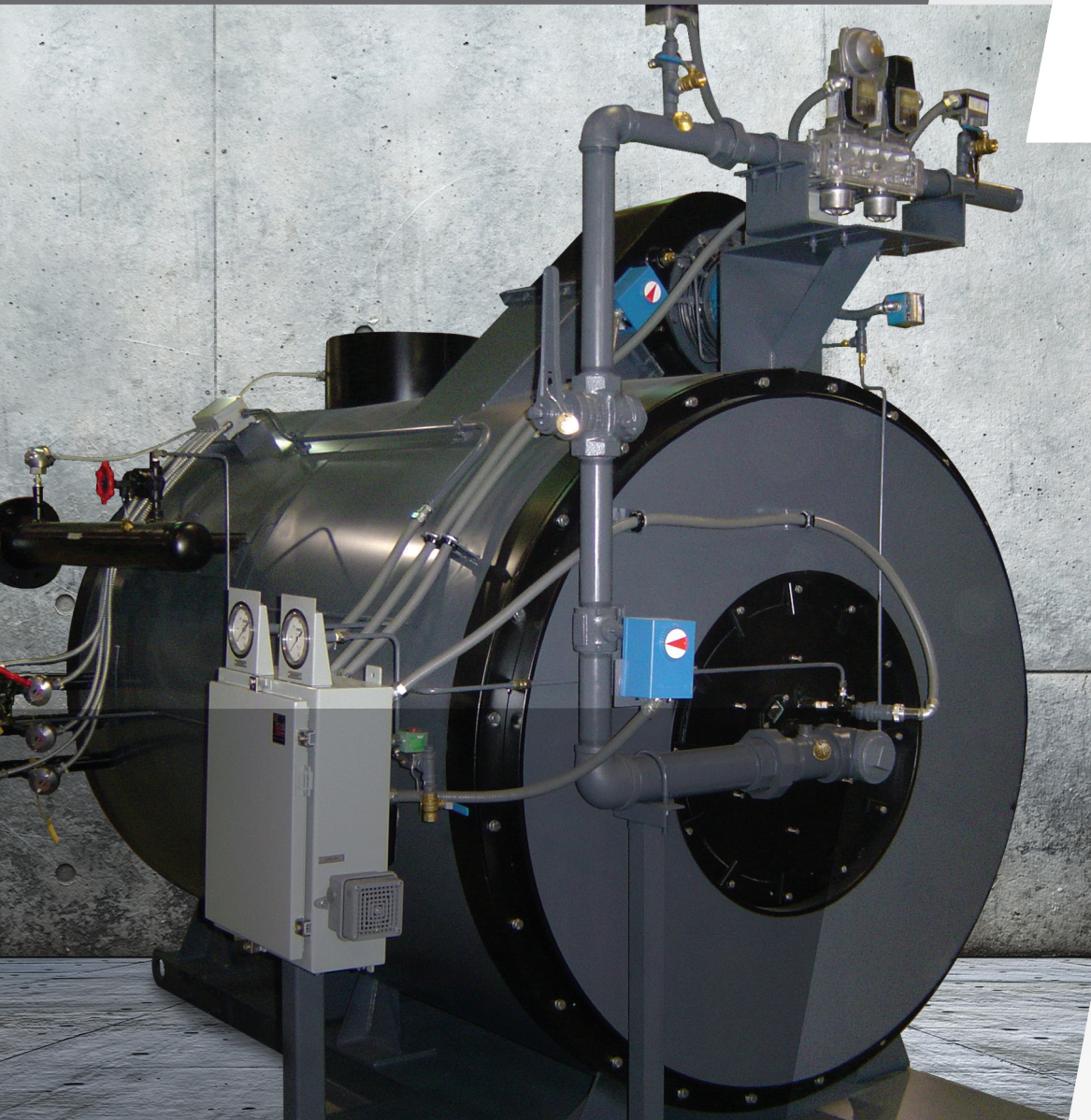




SUPERHEATERS



SUPERHEATERS
FUEL FIRED AND
ELECTRIC UNITS

VAPOR POWER INTERNATIONAL

SUPERHEATERS

Natural Gas and Fuel Oil Fired Units:

Capacities: from 400,000 to 7,700,000 BTU/HR
 Pressure: from 15 - 3200 PSIG
 Temperatures: Up to 1250° F

Electric Units:

Capacities: from 7.5 kW to 600 kW
 Pressure: from 15 - 2500 PSIG
 Temperatures: Up to 1200° F
 Voltages: from 208 - 600 Volts

Natural Gas and Fuel Oil Fired Superheaters

The Vapor Power Superheater is a coil tube design, similar to our steam generators. Saturated steam enters at the inlet of the superheater, passes through a set of coils, and hot combustion gases envelop the entire tube surface to achieve very high heat transfer rates. Superheated steam leaves the superheater at the steam outlet manifold. The fuel and combustion air is controlled by a linkageless fuel air ratio control that responds to steam temperature.

Electric Superheaters

Vapor Power electric superheaters are custom designed to provide high efficiency, fast response heating. All of our electric superheaters utilize rugged electric resistance heating elements mounted in an ASME pressure vessel. SCR temperature control provides full modulation to maintain the desired steam temperature. Similar to our fuel fired superheaters, the electric superheaters are available in a wide variety of pressure and temperature combinations. An electric superheater can be located adjacent to the saturated steam source or remote in the system if only a portion of the steam load requires superheat.

Controls

Natural Gas and Fuel Oil Fired Superheaters

The Vapor Power Superheater is available with the latest in communications and controls technology. Linkageless burner controls are a standard feature and a variety of PLC and HMI solutions are available. Our in-house programming provides customized solutions for every application. Remote data acquisition and control is available via ModBus, Ethernet, Bacnet, or other communication protocol.

Fuels

- Natural gas
- Light fuel oils
- Propane

ADVANTAGES

- FAST STARTUP
- FULLY MODULATING OUTPUT
- COMPACT SIZE & WEIGHT
- HIGH PRESSURE
- HIGH TEMPERATURE
- SAFE OPERATION

APPLICATIONS

- Equipment Test
- Mining
- Power Plant
- Process Steam & Heat
- Valve Testing

DATA AND DIMENSIONS

Fuel Fired Superheaters

Model	Configuration	Thermal Capacity Btu's/hr x1000	Dimensions Inches			Approx. Shipping Weight lbs
			L	W	H	
4320	Vertical	400	68	43	64	1,500
4321	Vertical	600	77	50	74	3,000
4326	Vertical	900	77	50	74	3,000
4322	Vertical	1,500	84	51	85	4,500
4323	Vertical	2,000	96	60	80	5,000
5975-15	Horizontal	1,500	75	78	74	7,100
5975-20	Horizontal	2,200	80	78	74	7,600
5975-30	Horizontal	3,000	91	78	74	8,000
5975-40	Horizontal	4,000	96	89	94	11,300
5975-50	Horizontal	5,100	115	89	94	13,000
5975-65	Horizontal	6,500	122	89	94	15,000
5975-75	Horizontal	7,700	146	89	94	17,000

Design pressures available up to 3200 psig
 Design temperatures available up to 1250° F

AFTER MARKET

As one of the industry's leading manufacturers of boilers, packaged steam generators and thermal fluid heaters, Vapor Power International has everything you need to keep your boilers operating in top condition. That includes complete retrofit upgrade kits to outfit your boilers with the latest in controls and components.

- Control Panels
- Flame Safeguard Controls
- Linkageless Conrols
- Temperature Controls

MODEL NUMBERS AND RATINGS

Electric Superheaters

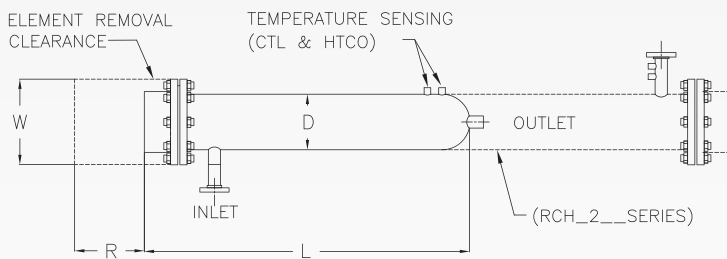
Model & Series	QTY of Elements	KW vs ELEMENT WATT DENSITY (WPSI)				Model & Series	QTY of Elements	KW vs ELEMENT WATT DENSITY (WPSI)				DIMENSIONS (INCHES)				
		12.5*	18*	50**	75**			12.5*	18*	50**	75**	D	W	L1	L2	R***
RCH6124	6	7.5	7.5	30	30	RCH6224	12	15	15	60	60	6	11	30	48	24
RCH6130	6	---	9	---	36	RCH6230	12	---	18	---	72	6	11	36	60	30
RCH6136	6	---	15	---	60	RCH6236	12	---	30	---	120	6	11	42	72	36
RCH6142	6	15	18	60	72	RCH6242	12	30	36	120	144	6	11	48	84	42
RCH6148	6	---	20	---	80	RCH6248	12	---	40	---	160	6	11	54	96	48
RCH8124	12	15	15	60	60	RCH8224	24	30	30	120	120	8	13.5	30	48	24
RCH8130	12	---	18	---	72	RCH8230	24	---	36	---	144	8	13.5	36	60	30
RCH8136	12	---	30	---	120	RCH8236	24	---	60	---	240	8	13.5	42	72	36
RCH8142	12	30	36	120	144	RCH8242	24	60	72	240	288	8	13.5	48	84	42
RCH8148	12	---	40	---	160	RCH8248	24	---	80	---	320	8	13.5	54	96	48
RCH0124	18	22.5	22.5	90	90	RCH0224	36	45	45	180	180	10	16	30	48	24
RCH0130	18	---	27	---	108	RCH0230	36	---	54	---	216	10	16	36	60	30
RCH0136	18	---	45	---	180	RCH0236	36	---	90	---	360	10	16	42	72	36
RCH0142	18	45	54	180	216	RCH0242	36	90	108	360	432	10	16	48	84	42
RCH0148	18	---	60	---	240	RCH0248	36	---	120	---	480	10	16	54	96	48
RCH0124	24	30	30	120	120	RCH0224	48	60	60	240	240	10	16	30	48	24
RCH0130	24	---	36	---	144	RCH0230	48	---	72	---	288	10	16	36	60	30
RCH0136	24	---	60	---	240	RCH0236	48	---	120	---	480	10	16	42	72	36
RCH0142	24	60	72	240	288	RCH0242	48	120	144	480	576	96	89	89	94	94
RCH0148	24	---	80	---	320	RCH0248	48	---	160	---	640	146	89	89	94	94

* These watt densities are applicable to steam superheaters, gas heaters, and thermal fluid heaters

*** Element Removal Clearance - Addition to length required for removal of elements

** These watt densities are applicable to water and glycol heaters

Dimensions are for Class 150 design



VAPOR POWER INTERNATIONAL



551 S. County Line Road
Franklin Park, IL 60131

P: 630.694.5500 F: 630.694.2230

VaporPower.com